

Analyzing the space-shift differential semblance gradient - interim progress report

William Symes

TRIP 2011 Annual Review

Agenda

Semblance gradient artifacts

Where they come from

What to do about them

That is not all...

Space-shift Differential Semblance

Space-shift gather / HOCIG via shot record migration: (IEI, Biondi, Sava, Fomel, ...)

$$I(x, z, h) = \sum_{x_s} \int dt S(x - h, z, t; x_s) R(x + h, z, t; x_s)$$

S = source wavefield, R = receiver wavefield - computed anyhow (depth extrapolation, two-way plus time reversal, ...)

2D for convenience only!

Differential semblance MVA objective, in simplest form:

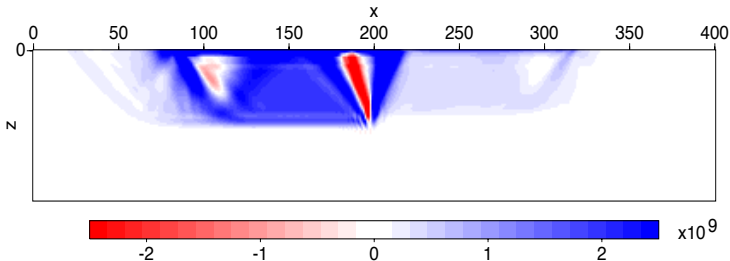
$$J[v] = \int \int \int dx dz dh h^2 |I(x, z, h)|^2$$

Shen's thesis 04, others (Shen & coauthors 03, 05, 07, Shen & S. 08, Kabir 07, Fei 09, 10)

Space-shift Differential Semblance

Upshot, it works, but...

Gradient tends to oscillate horizontally along upward paths from reflector singularities (truncations, corners) - Biondi 08, Fei 10, Vyas 10. Not just for DS:



Stack power gradient, courtesy R.-E. Plessix

Space-shift Differential Semblance

Besides being ugly, these oscillations inhibit convergence of optimization algorithms - seem like poor search directions

Discussions with Rene-Edouard Plessix, Hervé Chauris, and Maarten de Hoop at Newton Institute, Cambridge, December 2011



Agenda

Semblance gradient artifacts

Where they come from

What to do about them

That is not all...

Ray-theoretic expression for the gradient

For outline of this computation, see 2010 TRIP AR - here, result + interpretation

Assess effect on gradient at “wrong” velocity: assume that d is Born data for “target” velocity v^* , reflectivity $r(z_d, x_d)$. Presume that both v, v^* are homogeneous, so rays are straight lines. Write

$$d(x_s, x_r, t) =$$

$$\int \int dx_d dz_d (\dots) \delta(t - T^*(x_r, x_d, z_d) - T^*(x_s, x_d, z_d)) r(z_d, x_d)$$

[“(…)” = amplitude and frequency factors]

Ray-theoretic expression for the gradient

Insert into expression for J , get

$$J[v] = \int \int \int \int dx_d dz_d dx'_d dz'_d r(z_d, x_d) r(z'_d, x'_d) K(z_d, x_d; z'_d, x'_d)$$

in which K has explicit expression in terms of ray-theoretic quantities and oscillatory integrals

Via stationary phase analysis, obtain

$$\delta J[v] \delta v = \int \int \int \int dx_d dz_d dx'_d dz'_d r(z_d, x_d) r(z'_d, x'_d) \delta K(z_d, x_d; z'_d, x'_d)$$

Ray-theoretic expression for the gradient

$$\begin{aligned} \delta K &= \int \int \int d\theta_s d\theta_r d\omega e^{i\Phi} A \\ &\times \int_0^{Bz_d} dz' (Bz_d - z') \left[V_r \cdot \nabla \frac{\delta v}{v}(z', x_d + z_d \tan \Theta_r + z' \tan \theta_r) \right. \\ &\quad \left. + V_s \cdot \nabla \frac{\delta v}{v}(z', x_d + z_d \tan \Theta_s + z' \tan \theta_s) \right] \end{aligned}$$

$\Phi = (x_d - x'_d)\Phi_x + (z_d - z'_d)\Phi_z$, $\Phi_x, \Phi_z, V_s, V_r, B, A =$ messy functions of $\theta_r, \Theta_r = \arcsin\left(\frac{v}{v^*} \sin \theta_r\right), \dots$

Ray-theoretic expression for the gradient

Always true: V_s, V_r not parallel to rays

Consequence for *conormal* reflectors, that is, for some vector field W ,

$$W \cdot \nabla r = \alpha r$$

in which α is a smooth function (or somewhat more general op)

Can express $V_s = a_s W + b_s R_s$, where R_s is velocity vector of source ray, similar for V_r

Ray-theoretic expression for the gradient

Then integrate by parts: transfer W to r , R_s, R_r to travelttime-dependent coefficients:

$$\delta J[v] \delta v = \int g \delta v \Rightarrow g = \nabla J[v]$$

is smooth function = “nice” gradient

Ray-theoretic expression for the gradient

If r is *not* conormal - for any choice of W , $W \cdot \nabla r$ is more singular than r - then $\delta J[v] \delta v$ depends on derivatives of δv , dependence localized near rays from singularities in $W \cdot \nabla r$

Manifestation in computations: oscillations across ray fan from corners, truncations to surface

Agenda

Semblance gradient artifacts

Where they come from

What to do about them

That is not all...

Proposed Remedy

Conventionally: “The Gradient” = Riesz representer of derivative via L^2 inner product (“continuous dot product”) and discrete approximations

Non-existence of gradient not a new phenomenon - conventional reflection traveltime tomography gradient does not exist, either! (Delprat-Jannaud & Lailly, GJR 1993).

Morally: rate of change of objective (traveltime misfit, DS,...) depends on *derivatives* of velocity perturbation, really only makes sense for *smooth* $v, \delta v$

⇒ must use inner product / norm that *controls* derivatives

Proposed Remedy

Natural family of norms for this application: L^2 Sobolev family

$$\|\delta v\|_k^2 = \int d\mathbf{x} [\delta v (I - \sigma^2 \nabla^2)^k \delta v]$$

Comparison: “ordinary” gradient $\nabla_0 J$, Sobolev k -norm gradient $\nabla_k J$

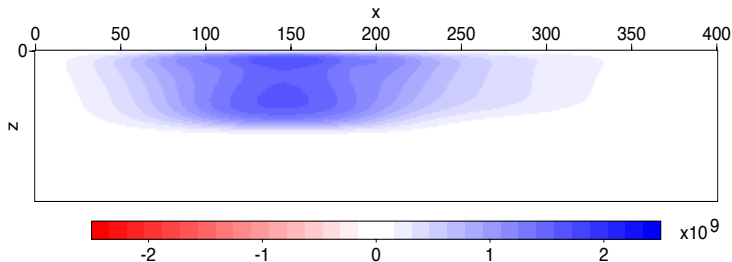
$$\nabla_k J = (I - \sigma^2 \nabla^2)^{-k} \nabla_0 J$$

obtain k gradient from ordinary gradient by application of *smoothing* operator - large horizontal oscillations suppressed - isotropic smoothing applies also to VOCIG-based DS

Proposed Remedy

Example: use Sobolev 1-norm to construct regularized gradient of Stack Power gradient

Free parameter in norm \sim length scale of smoothing by inverse Helmholtz.



H^1 stack power gradient, smoothing length = 100 m vertical, 1 km horizontal

Agenda

Semblance gradient artifacts

Where they come from

What to do about them

That is not all...

Loose ends, follow-ons

- ▶ How to choose weights in Sobolev norm, aka smoothing lengths? Have to do better than “so it looks nice” ...
- ▶ How to understand (apparently) different fixes proposed by Fei and Williamson, and Albertin? Appear to *decouple* reflector, gradient regularity and produce good descent direction - but then “gradient” is gradient of ???

Further work by Gang of Four anticipated, and students are being recruited...

Loose ends, follow-ons

Plans:

- ▶ sabbatical leave AY 2012-13
- ▶ “The Book” - review with new TRIP students as part of getting them started on inversion-related projects
- ▶ space-shift DS - are stationary points global mins?
- ▶ rational basis for nDS, or extended FWI in general - reconcile smoothness sense of forward map (uniform norm) with appropriate & *computable* defn of gradient - already a hint from adjoint state method!
- ▶ extend IWAVE++ to encompass space-shift imaging, WEMVA
- ▶ move towards a rigorous inversion exercise with field data: does *actually fitting data* (few % RMS) teach us anything useful about the subsurface? Must do it to find out!